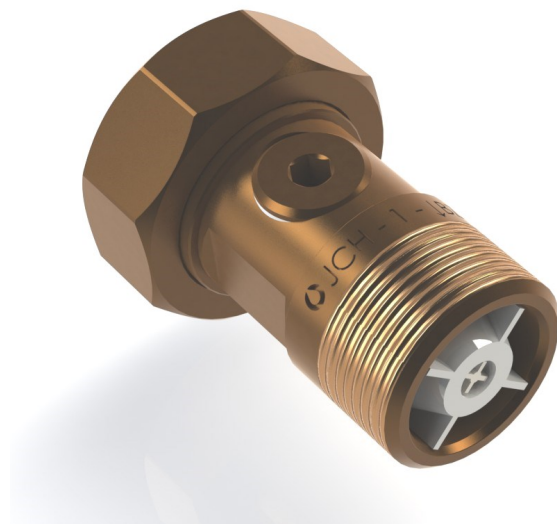


# Water meter union - Bronze

## Type 2286

### Water meter union with check Valve



#### Application:

Water meter unions in Bronze can be mounted in new as well as existing installations where backflow protection for medium category 2 are required according to EN 1717. Bronze alloy protect against corrosion in all legal water qualities regardless of pipe material and fittings. To be used when changing water meter where the existing union are replaced.

Type 2286 Is available for all common water meter installations with 1/4" to 2" connection and exist in length 40-82,5 mm. Check valve and inspection plug are easily accessible and the check valve is easy to check. Designed to be used for both cold and hot water.

#### Product Description:

Nipple part machined in CC499K.

Plug machined in CC499K.

Union nut machined in CC499K

Materials are approved according to 4MS UBA list 8th Revision 01.12.2017

Check valve cartridge.

#### Certificates/Test:

GDV approved, cert. 03/00122

Tested according to NKB9 and EN/DS 13959

100 % quality check of each valve.

Yearly audit test, carried out by The Danish Institute of Technology.



**61 Inspected by DTI**

#### Technical Data

Low opening pressure

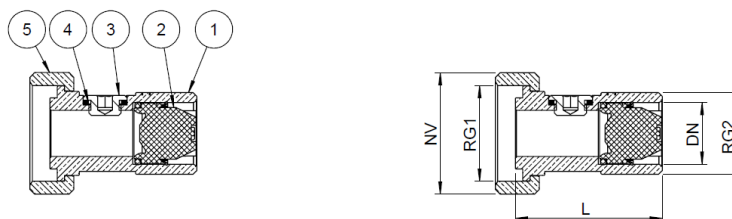
Max temperature 90° C

Working pressure 10 bar (tested at 16 bar)

# Water meter union - Bronze

## Type 2286

### Water meter union with check Valve



Component	Material	Component	Material
1. Nipple part	CC499K	2. Check valve cartridge	POM
3. Plug	CC499K	4. Gasket	PTFE
5. Union nut	CC499K		

Purchase no.	LNS no.	DN mm	RG1 "	RG2 "	L mm	NV mm	Estimated Weight kg
484912-004	347-015-98-04	15	¾	½	40	30	0,10
484912-006	347-020-98-05	20	1	¾	50	37	0,19
484912-106	347-020-98-08	20	1	¾	80	37	0,24
484912-008	347-025-98-00	25	1¼	1	60	46	0,33
484912-010	347-032-98-12	32	1½	1¼	72,5	52	0,57
484912-011	347-040-98-11	40	2	1½	82,5	66	0,87

