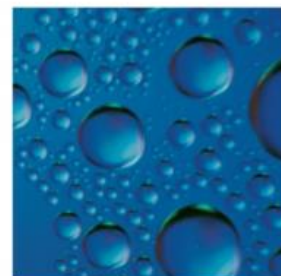


# Ball valve Type 745511.

With male and female threads. Full bore.  
VA and SITAC approved



Version 0116



**Ball valve with external and internal threads:**

**Application:**

Service valve for water supply and sewage.  
Suitable for drilling under pressure

**Test:**

JCH 100% test

**Accessories:**

Installation units: No.: 145221-000 and No.: 145223-000.

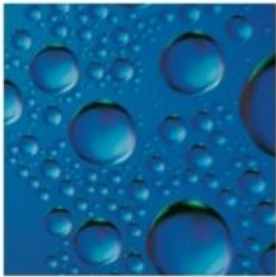
The installation units can be ordered in two different  
sizes: 900-1500mm and 1100-1900mm

**Material**

Body:	DZR Brass CW625N
Spindle:	Stainless steel - AISI 303
Spindle-gasket:	SEDI PTFE + O-rings of NBR rubber
Ball:	Stainless acid proof steel - AISI 316
Top gasket:	NBR O-rings
Top union:	DZR Brass CW602N
Gasket inside:	SEDI PTFE

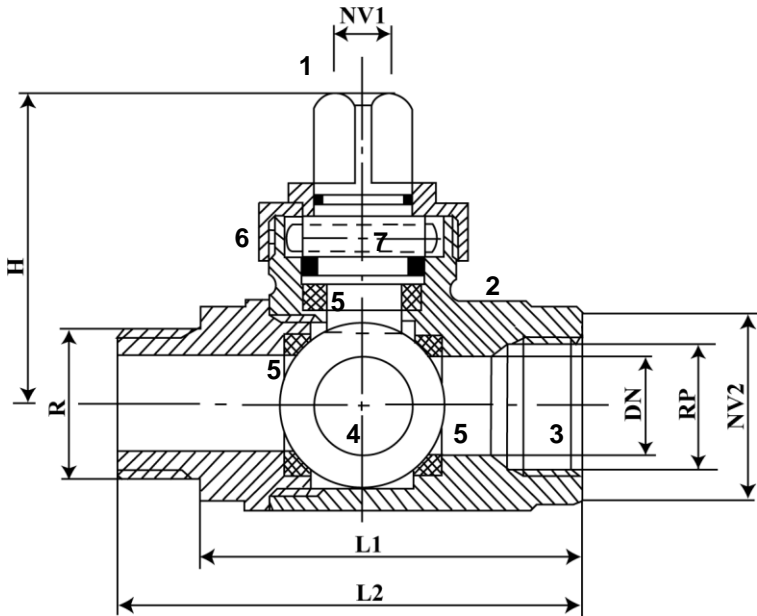
# JCH ball valve Type 745511.

## With 16mm # operating key.



Version 0116

Ball valve type 745511 is suitable as service valve for water supply and sewage. The male and female threads gives many different opportunities of connections. The valve can be used for drilling under pressure because of the full bore version. The valve is quik and easy to install and use. The valve is made of the finest and best materials.



### Components

1. Spindle

2. Body

3. connector

4. ball

5. SEDI PTFE gaskets
6. Union nuts

7. NBR O-rings

Order no.	LNS no.	DN	L1 mm	L2 mm	H mm	NV1 mm	NV2 mm	weightt kg
745511-006	343-020-00-00	20	79	95	61	16	39	0,9
745511-008	343-025-00-00	25	89	107	66	16	42	1,1
745511-010	343-032-00-00	32	100	118	71	16	56	1,8
745511-011	343-040-00-00	38	102	122	81	16	70	2,6
745511-012	343-050-00-00	50	114	136	89	16	70	3,5

JCH A/S

Karetmagervej 21 DK-7100 Vejle Tel. +45 75 85 84 08 Fax +45 75 85 80 82  
CVR-nr. 87 56 20 18 | CVR-nr. DK 15 30 02 72